



Approximate total area⁽¹⁾
 996 ft²
 92.4 m²

(1) Excluding balconies and terraces

Calculations reference the RICS IPMS 3C standard. Measurements are approximate and not to scale. This floor plan is intended for illustration only.

GIRAFFE360



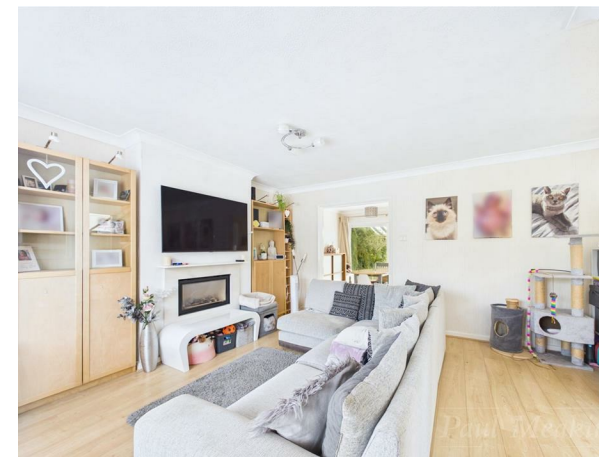
£475,000 Southviews, South Croydon, CR2 8SH



Nestled in the desirable road Southviews, South Croydon, this charming three-bedroom semi-detached house offers a perfect blend of comfort and modern living. Upon entering, you are greeted by a useful downstairs cloakroom that leads seamlessly into the inviting living room and dining room, providing an ideal space for both relaxation and entertaining.

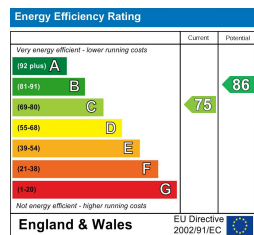
The property boasts a refitted kitchen, which is both stylish and functional, making it a delight for any home cook. The contemporary bathroom has also been thoughtfully updated, ensuring that it meets the needs of modern family life.

One of the standout features of this home is the beautifully landscaped rear garden, which offers a tranquil outdoor space with awning for enjoying sunny days or hosting gatherings with friends and family. Additionally, the property includes a detached garage and off-street parking, providing convenience and peace of mind for storage and parking.



This semi-detached house is not just a home; it is a lifestyle choice, situated in a friendly neighbourhood with easy access to local amenities and transport links. Whether you are a growing family or looking for a comfortable space to settle down, this property is sure to impress. Do not miss the opportunity to make this lovely house your new home.

Entrance	Landing	Bathroom
W.C	Bedroom	Garden
Living Room 12'2 x 14'3 (3.71m x 4.34m)	9'0 x 14'10 to wardrobes (2.74m x 4.52m to wardrobes)	Garage 7'11 x 17'3 (2.41m x 5.26m)
Dining Room 9'4 x 9'6 (2.84m x 2.90m)	Bedroom 11'8 x 9'3 (3.56m x 2.82m)	Off street parking
Kitchen 8'11 x 9'5 (2.72m x 2.87m)	Bedroom 7'1 x 11'4 (2.16m x 3.45m)	



TAX BAND: D

Agents Note: Whilst every care has been taken to prepare these sales particulars, they are for guidance purposes only. All measurements are approximate and for general guidance purposes only and whilst every care has been taken to ensure their accuracy, they should not be relied upon and potential buyers are advised to recheck the measurements

